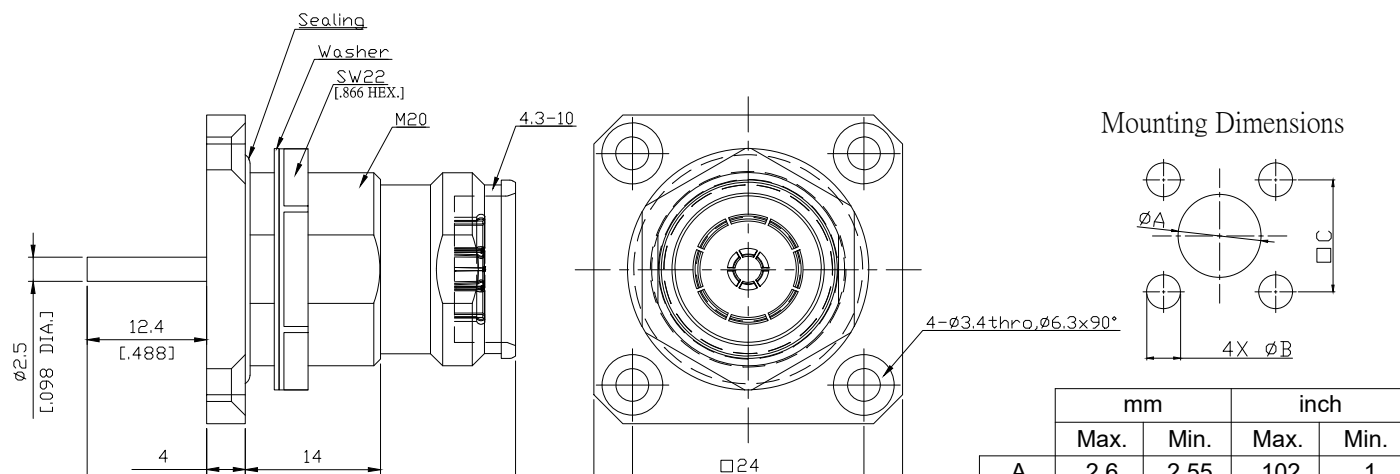


4.3-10mm Jack (Female) Connector Solder Attachment 4 Hole Flange Mount
Stub Terminal, 24 mm (.945 inch) Hole Spacing DC-6 GHz VSWR1.17

43102GFA50-3200A / H4



All dimensions are in mm [inch]

Tolerances according to DIN ISO 2768-mH

Interface

According to

IEC 61169-54

Electrical Data

Impedance	50 Ω
Frequency	DC to 6 GHz
VSWR (Return Loss)	≤ 1.17 (≥ 22 dB)
Insertion Loss	≤ 0.05 x √F (GHz) dB
Insulation Resistance	≥ 5 GΩ
Center contact resistance	≤ 1.0 mΩ
Outer contact resistance	≤ 1.0 mΩ
Test voltage	2500 V rms
Working voltage	500 V rms
RF-leakage	≥ 110 dB @ DC to 6 GHz for tool tightened plugs ≥ 70 dB @ 3 to 6 GHz for tool-less plugs
Power handling	500 W @ 2.0 GHz

Material And Plating

Piece Parts	Material	Plating
Centre contact	Beryllium Copper	Gold plating, 3 pinch (Non-magnetic nickel-phosphorus underplating, 80 pinch)
Body	Brass	Copper-Ting-Zinc Alloy
Insulator	PTFE	
Coupling nut	Brass	Copper-Ting-Zinc Alloy
Gasket	Silicon Rubber	

4.3-10mm Jack (Female) Connector Solder Attachment 4 Hole Flange Mount
Stub Terminal, 24 mm (.945 inch) Hole Spacing DC-6 GHz VSWR1.03

43102GFA50-3200A / H4

Mechanical Data

Coupling mechanisms	Screw-lock
Mating Cycles	≥ 500
Terminal Type	Stub
Captivated Type	Mechanical Captivation
Recommended torque	5 Nm

Environmental Data

Temperature Range	-65°C to +165°C
Thermal shock	IEC 61169-1 9.4.4
Corrosion	ISO 21207 method B
Vibration	IEC 61169-1 9.3.3 and IEC 60068-2-64
Shock	IEC 61169-1 9.3.14
Moisture Resistance	IEC 60529, IP68 1.5 h / 1 m
RoHS	compliant

Packing

Single or 100